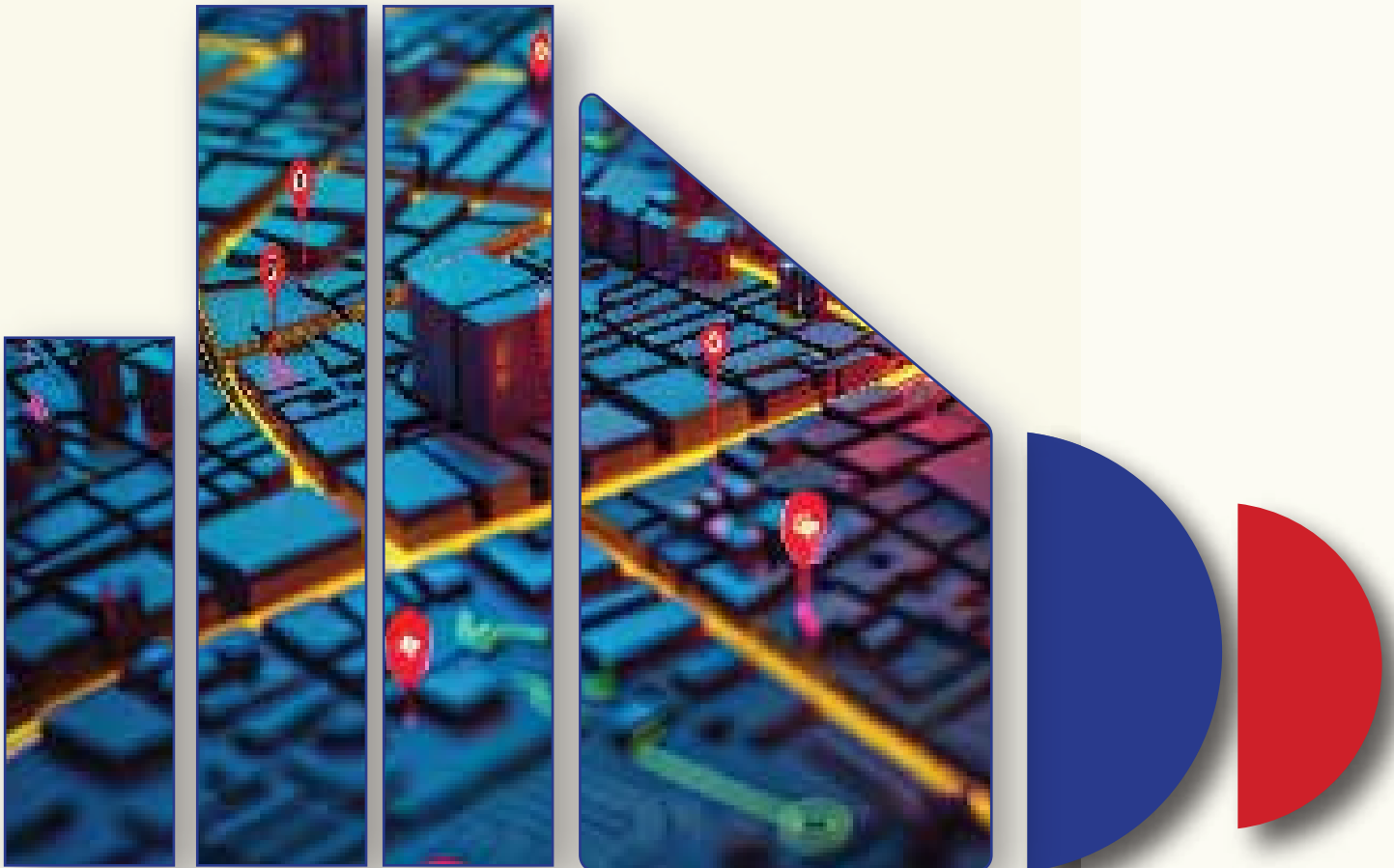




Elevate Your Career with QGIS Software in GIS and Spatial Analysis



Contact Us

P: +91 9960613683 **E:** classes@bimmantra.com **W:** www.bimmantra.com
A: 1st Floor, Prime Landmark Building, off NIBM Road, Kondhwa, Pune, Maharashtra 411048.

MASTER'S IN GIS AND REMOTE SENSING WITH QGIS

Explore new opportunities in Geographic Information Systems (GIS) and Remote Sensing with QGIS, a powerful yet user-friendly mapping software. In our Master's in GIS & Remote Sensing with QGIS training program, you'll gain hands-on experience in creating, analyzing, and managing location-based data efficiently to make informed decisions for any project. Whether you're a beginner or a seasoned professional,

WHY JOIN US

- Online/ Offline classroom program.
- Industry Expert Trainers with Interactive Q&A Sessions
- Get Certified with 45 Day Hands-On Experience
- Work on Real-World Projects
- Guaranteed 100% placement support.
- Guidance up to Placement
- Mock Interviews Preparation

MODULES OFFERED

SECTION 1

MODULE 1

Introduction of GIS

1. Qgis Software Interface
2. Coordinate System
3. Applications

MODULE 2

Georeferencing

1. Georeferencing the Toposheet
2. Adding Control Points
3. Transformations
4. Adjusting and Checking Accuracy

MODULE 3

Introduction to Google earth Pro

1. Interface overview
2. Adding and editing placemarks (point features)
3. Drawing paths (line features)
4. Creating polygons
5. Measurement tools
6. Importing GIS data (e.g., shapefiles, CSV files)
7. Overlaying custom maps (image overlays)
8. Exporting KML files

MODULES OFFERED

SECTION 1

MODULE 4

Create/ Modify Shapefile

1. Creating Shapefile
2. Editing Shapefile
3. Saving and exporting

MODULE 5

Create/ Modify Geopackage

1. Creating Geopackage
2. Adding Datasets
3. Editing Geopackage

MODULE 6

Digitisation

1. Digitisation of Point , Line & Polygon Layer
2. Creating Vector files and Data Collection
3. Advance Digitization
4. Snapping tool

MODULE 7

Labelling

1. Labeling Features
2. Advanced Labeling Techniques

MODULES OFFERED

SECTION 1

MODULE 8

Symbology

1. Basic Symbology
2. Classified Symbology
3. Proportional and Graduated Symbols

MODULE 9

Working With Attribute Table

1. Attribute Table Creation
2. Editing Attributes
3. Join Table
4. Data types

MODULE 10

Field Calculator

1. Automatic Field Update
2. Field Data Handling
3. Multiple Field Calculation

MODULE 11

Geometric Calculator

1. Calculating Areas and Lengths

MODULES OFFERED

SECTION 1

MODULE 12

Querying

1. Attribute Queries
2. Spatial Queries

MODULE 13

Geoprocessing

1. Clip
2. Buffer
3. Union
4. Dissolve

MODULE 14

Map Layout and Printing

MODULE 15

Plugins

1. Plugin for creating Html
2. Plugin for adding Latitude and Longitude
3. Plugin For 3D Map View
4. HCMGIS
5. SRTM Downloader

MODULE 1

What is Remote Sensing?

1. Definition
2. Applications

MODULE 2

Satellites and Their Applications

1. Landsat
2. Sentinel
3. MODIS

MODULE 3

Remote Sensing Sensors

1. Active Sensors
2. Passive Sensors

MODULE 4

Electromagnetic Spectrum and Bands

1. Electromagnetic spectrum overview
2. What Are Bands?
3. Role of different bands in remote sensing
4. Visible Bands
5. Infrared Bands
6. Microwave Bands

MODULE 5

Band combinations

1. True color composite
2. False color composite
3. Infrared Vegetation analysis
4. Urban analysis
5. Land / water

MODULE 6

Composite Bands

MODULE 7

Introduction to USGS Earth Explorer

1. Find ROI
2. Filter Different types of Dataset
3. Downloading DEM and Landsat data

MODULE 8

Working with Satellite Data

MODULE 9

Downloading DEM and Landsat data

MODULE 10

Surface Analysis from DEM

1. Slope
2. Aspect
3. Hillshade
4. Contour generation

MODULE 11

Hydrological Analysis

1. Stream creation
2. Create Catchment
3. Define Outlet

MODULE 12

Vegetation and Water Indices

1. NDVI
2. NDWI
3. SAVI

MODULE 13

Reclassifying Indices

1. Export water bodies as .shp
2. Export vegetation as .shp

MODULE 14

Classification Techniques

1. Supervised Classification
2. Unsupervised Classification
3. Post-classification refinement
4. Algorithm-based grouping (e.g., K-means)

COURSE FEES

Master's in Geographic Information System with QGIS	
DURATION	45 Days
COURSE FEES	INR 18,000

BIM Mantra Academy offers a curriculum designed by experts in the field, ensuring that the course content is up-to-date with the latest industry practices. With access to experienced instructors and real-world projects, students are equipped with the skills needed to excel in their careers and stay competitive in the job market.

- **Certification Upon Completion | 100% Placement Assistance**

Contact Us

P: +91 9960613683 **E:** classes@bimmantra.com **W:** www.bimmantra.com

A: 1st Floor, Prime Landmark Building, off NIBM Road, Kondhwa, Pune, Maharashtra 411048.